



Make Your Design **REAL!**

Make Your Design **REAL!**



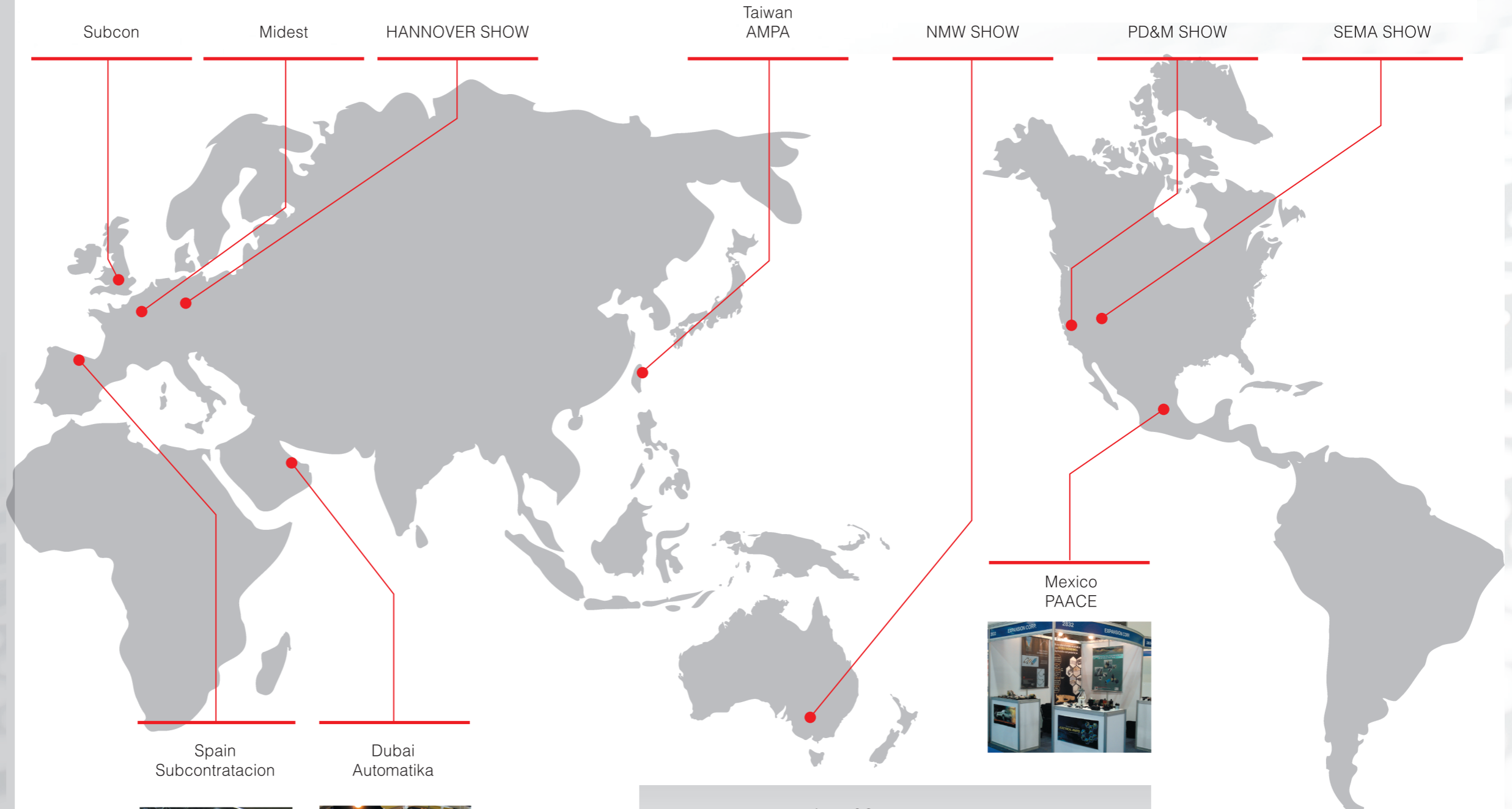
16F-1, NO.16 JIAN BA ROAD, CHUNG HO DISTRICT, NEW TAIPEI CITY 23511, TAIWAN
TEL:+886-2-8226-5199
FAX:+886-2-8226-5196
<http://oem.pantaiwan.com.tw>
Email: oem@pantaiwan.com.tw

Copyright © 2012 Pan Taiwan Enterprise. All rights reserved.

About Pan Taiwan

Established in 1977, we started as a trading company involved with Industrial Safety Equipments and Auto Parts. Pan Taiwan began to devote to OEM components field due to the strong demand from our clients later on.

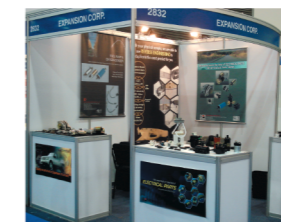
Our OEM business grows rapidly through the years. With the resources and technology advantages, we are able to provide customers with the product total solution in many different industries. Our superior team will get sufficient understanding of your needs, analyze and integrate the resources, develop the product in your design and manufacture for you. We are the partner that you can trust. We know what you need, and we make what you want.



Spain
Subcontratacion



Dubai
Automatika



Mexico
PAACE

PAN TAIWAN Corporate Social Responsibility

In addition to being customer oriented, Pan Taiwan also devotes to CSR as one of our most important commitments.

It covers sound corporate management, the balancing of stakeholder rights and interests, the promotion of environmental protection and energy conservation, and contribution and responsibility to the society.

Pan Taiwan is certified ISO 9001 compliant by the registrar SGS since Nov., 1996. For engineered components, reliable quality system is indispensable for ensuring the products could be produced in the limited time and meets all requirements from customers.

Control Plan

- Failure Mode & Effect Analysis (FMEA)
- Incoming Material Quality Control (IQC)
- In-Process Quality Control (IPQC)
- Statistical Process Control (SPC)
- Final QC (FQC)
- Measurement System Analysis (MSA)



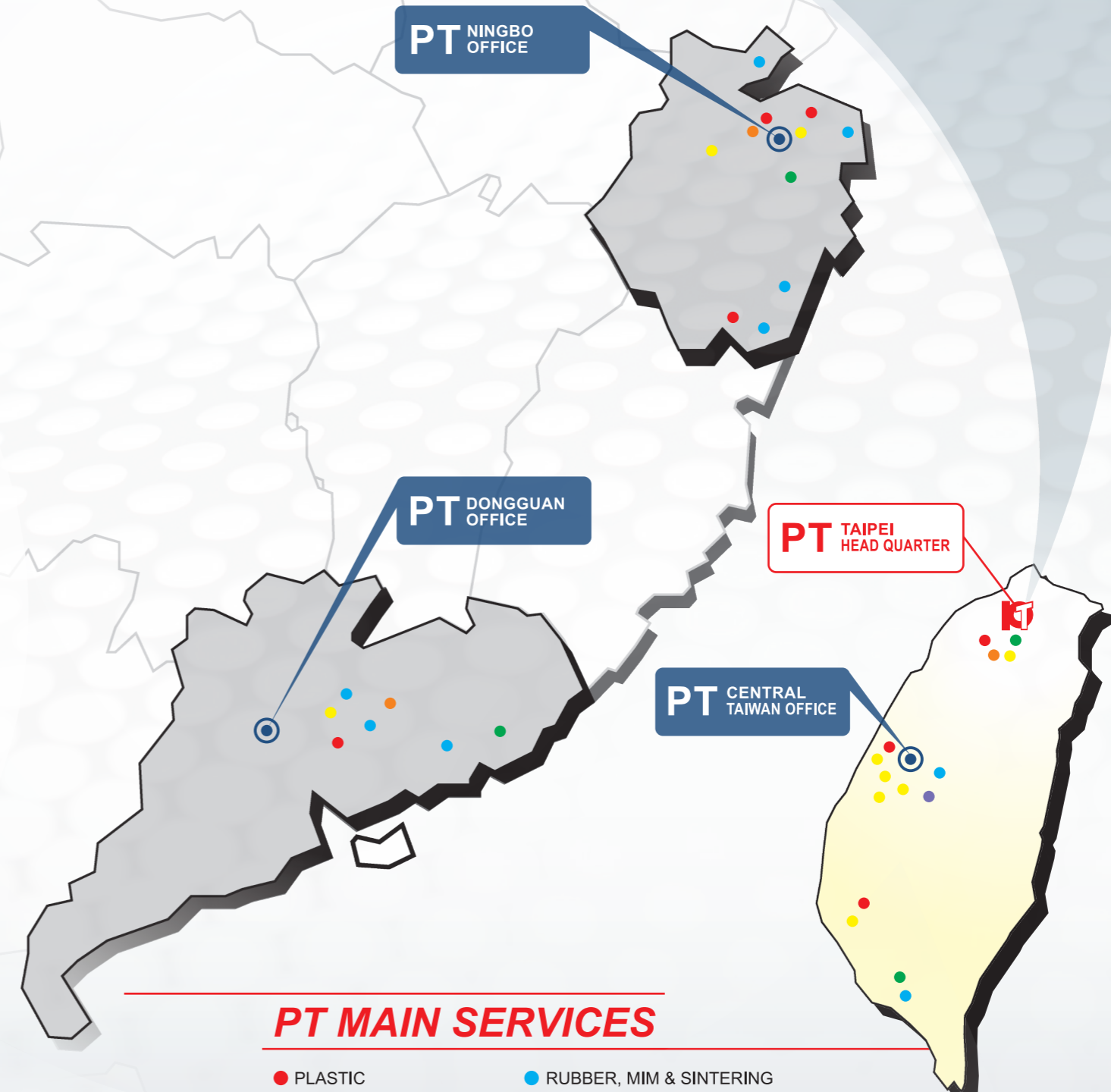
Make Your Design **REAL!**

With the combination of our in-house production and a wide range of supply chain network, PT provides you a cost efficient turn-key solution for all your needs.

Total Solution of Supplying Network

With integrated management of procurement through the vast manufacturing network in Taiwan and China, we help to save time and cost.

The Industries We Serve Include But Not Limited To:



PT MAIN SERVICES

- PLASTIC
- STAMPING
- MACHINING
- CASTING & FORGING
- RUBBER, MIM & SINTERING
- REVERSE ENGINEERING
- ASSEMBLY

TOTAL SOLUTION

Quality Engineering Components Supplier since 1977

Design

Development

Production

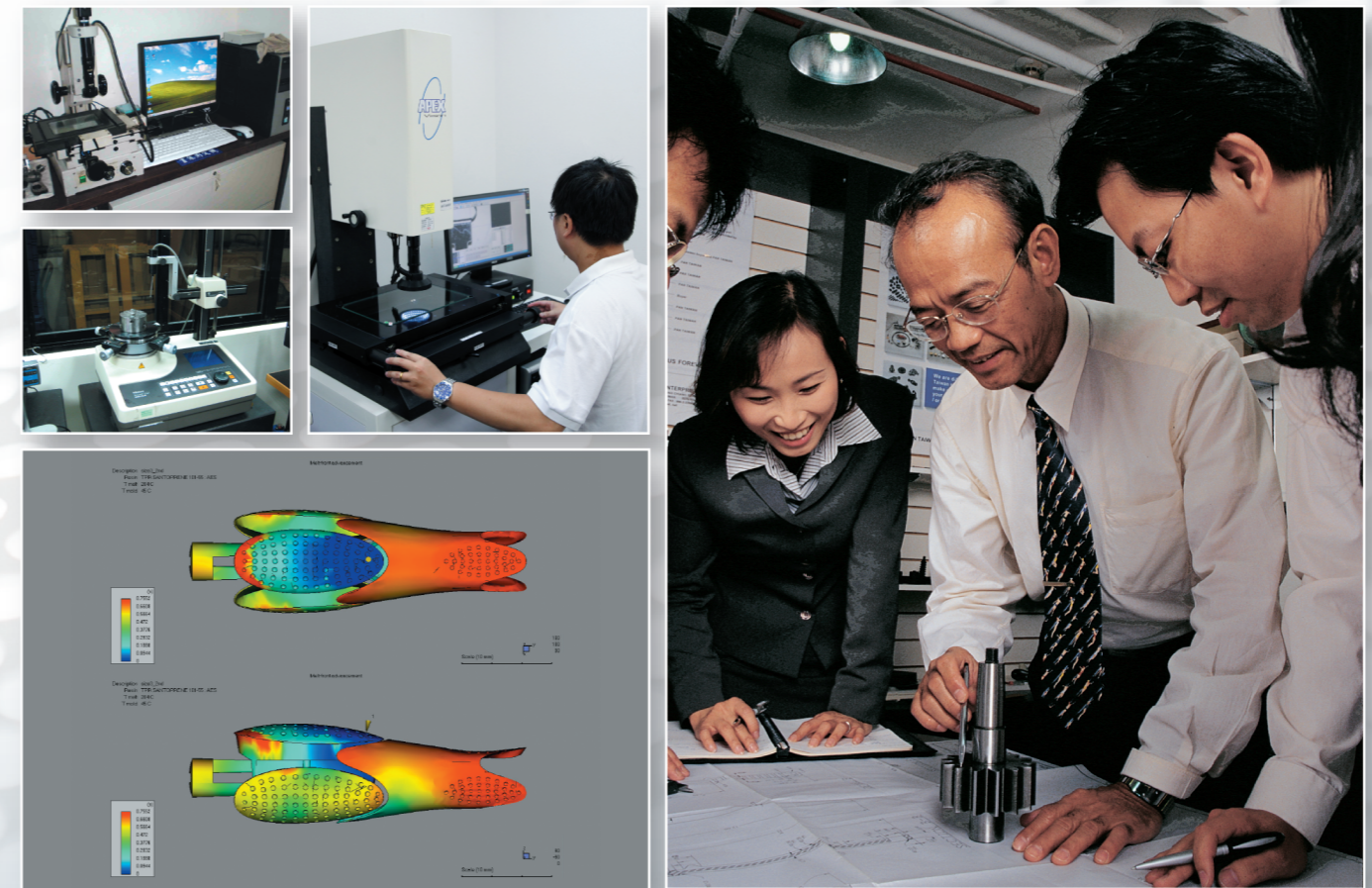
Logistic

Design

- Customized Production up to your design/drawing.
- Reverse engineering according to your samples.
- Besides your specified process and material, we will also provide you with the alternative options if necessary.
- With the experience in various production categories, we offer you the integration service. Keep you away from the headache resulted from the assembly interference and functional problem.

Development

- With input review in details, we do our best to make every project go smoothly as possible.
- Set up the inspection plan to control the critical dimensions.
- Make the most efficient arrangement for production processes.
- Select the most suitable and reliable sub-contractors combination from both Taiwan and China for your projects.
- Work with the sub-contractors closely to make sure the schedule is in control.
- Record the product development history and manage samples properly for production reference.



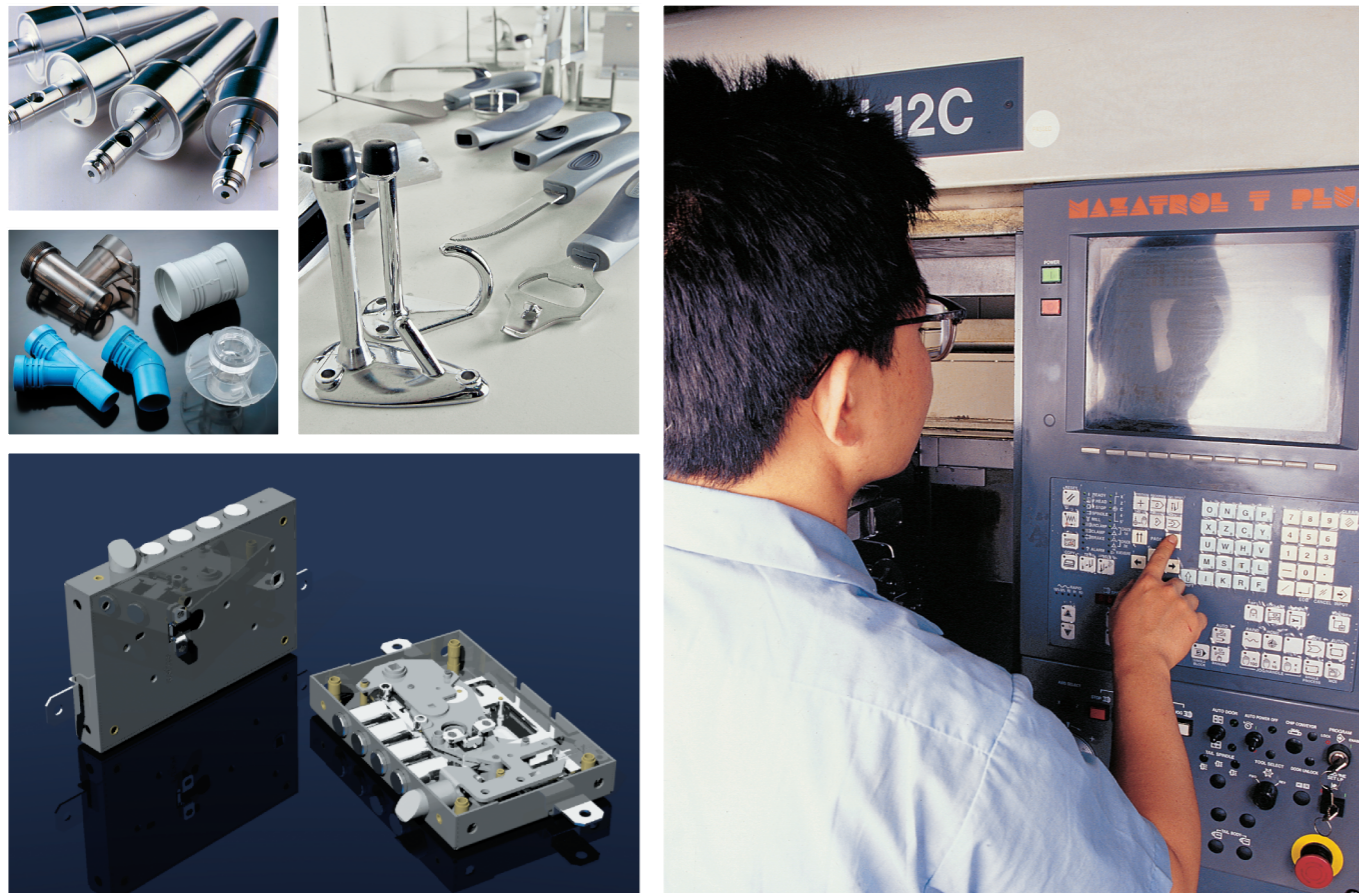
TOTAL

Production

- Conditional inventory management suitable for your purchase plan.
- Control the production schedule of various components to make sure the whole product assembly will be on time.
- In-process inspections and pre-shipment inspections identify non-conformances prior to shipment.
- Continuous improvement of manufacturing process and quality control.
- Timely emergency management of any unexpected production delay or quality issue.

Logistic

- Consolidate the shipment requests from PT's hundreds of customers make us have strong bargain power with forwarders.
- To save customer's time and cost, PT can work on the blanket orders, be feasible to adjust the production and shipping schedule by mutual agreement.
- We pay close attention to custom regulations in many countries and work closely with many logistic service providers to ensure timely deliveries of components and products.



SOLUTION



ISO



More Reasons to Choose Pan Taiwan!

Implement your green ideas to the products and the processes those are more environmental friendly.

- Respect and protect your intellectual property.
- Be responsible for the projects we develop for you.
- Enhance your buying power.
- Sourcing various products to save your time.
- Be your bridge between languages and business barriers.
- Be your warehouse in Taiwan and China.
- Shipping consolidation.



Commitments to All Pan Taiwan Customers!

- Always updating our manufacturing technology.
- Continuous improvement in quality, technology and management.
- Continuous training to our staff.
- Persistently building feasible supplier network.



PLASTIC

P13 ~ P14

PLASTIC



STAMPING

P15 ~ P16

STAMPING



MACHINING

P17 ~ P18

MACHINING



CASTING, FORGING

P19 ~ P20

CASTING, FORGING



RUBBER, MIM, SINTERING

P21 ~ P22

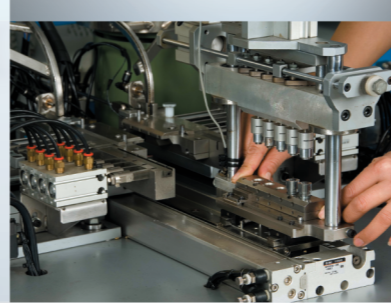
RUBBER, MIM, SINTERING



REVERSE ENGINEERING

P23 ~ P24

REVERSE ENGINEERING



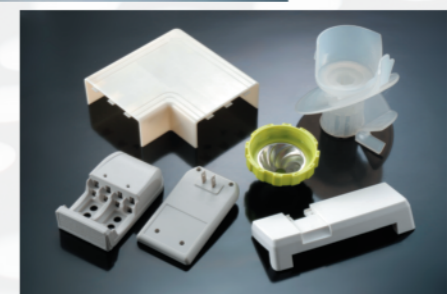
ASSEMBLY

P25 ~ P26

ASSEMBLY

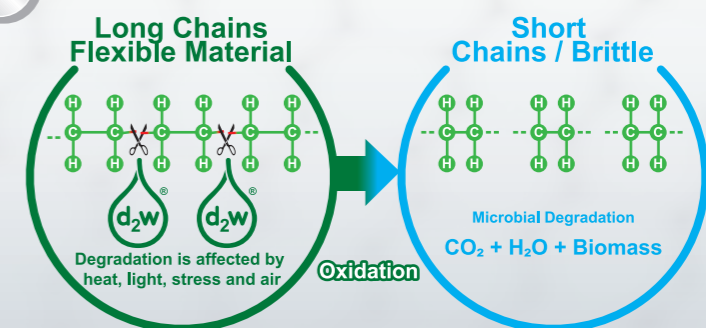
Plastic Components

Plastic Injection, Over Molding, Dual Injection, Gas Added Injection, etc.



Oxo-Biodegradable Plastic

In addition to engineering-plastic, d₂w[®] oxo-biodegradable plastic is strongly recommended and popular to use. Your environmentally friendly actions can be carried out with very little cost increase



PLASTIC

STAMPING

MACHINING

CASTING, FORGING

RUBBER, MIM, SINTERING

REVERSE ENGINEERING

ASSEMBLY



Stamping Components

Blanking, Piercing, Bending, Deep-Drawing, Progressive Stamping, Spot Welding, TIG Welding, Soldering, etc.



PLASTIC

STAMPING

MACHINING

CASTING, FORGING

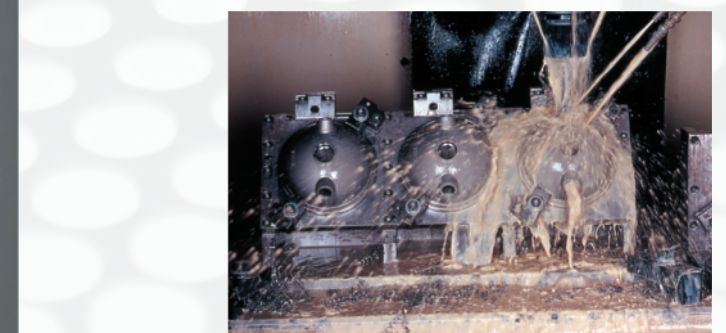
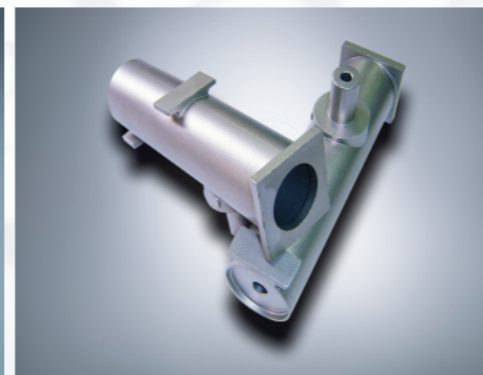
RUBBER, MIM, SINTERING

REVERSE ENGINEERING

ASSEMBLY

Machining Components

Multi-axis CNC Turning, Milling, Drilling, Tapping, Broaching, Gear Hobbing, etc.



PLASTIC

STAMPING

MACHINING

CASTING,
FORGING

RUBBER, MIM,
SINTERING

REVERSE
ENGINEERING

ASSEMBLY



Casting & Forging

Die Casting, Gravity Die Casting, Investment Casting, Sand Casting
Close-Die Forging, Drop Forging, Cold Forging, Cold Heading, etc.



PLASTIC

STAMPING

MACHINING

CASTING,
FORGING

RUBBER, MIM,
SINTERING

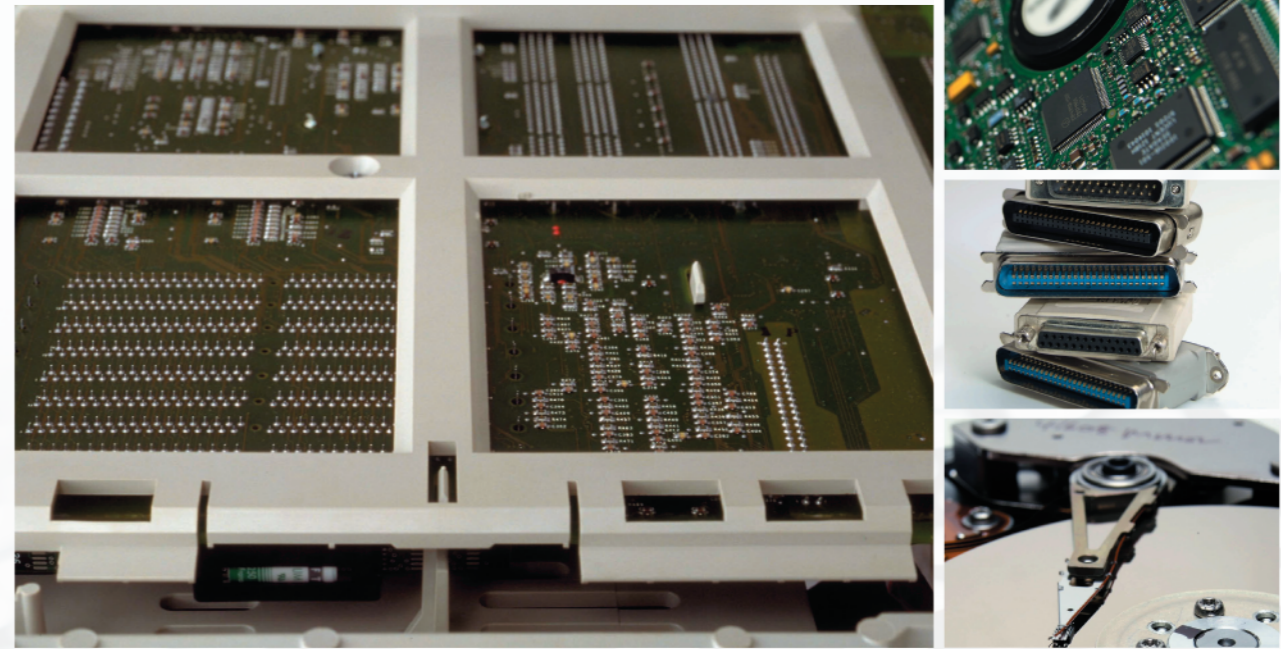
REVERSE
ENGINEERING

ASSEMBLY



MIM & Sintering Components

Electronic Components



Rubber Components



PLASTIC

STAMPING

MACHINING

CASTING,
FORGING

RUBBER, MIM,
SINTERING

REVERSE
ENGINEERING

ASSEMBLY

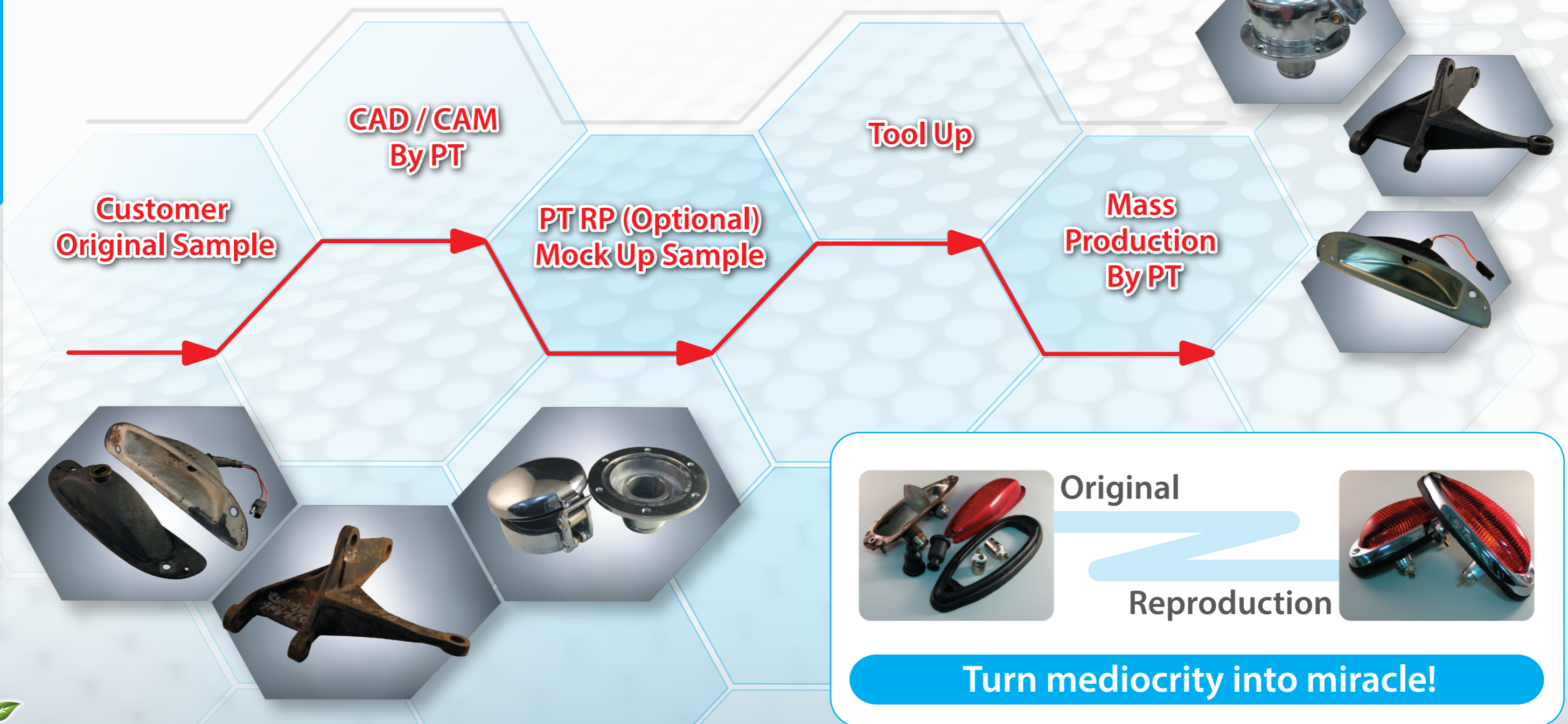
Reverse Engineering

With more than 30 years experiences in reverse engineering, we are able to duplicate or reproduce products according to your physical samples those may not be available in the market.

We understand the condition of some samples might not be perfect or being consistent among each other. Therefore, we usually build the drawing and mock-up samples to check the fitting and the specifications of the products with customers during the developing phase.

We also confirm the requirements of the products carefully to make sure they'll meet customers' needs. We have built hundreds of products and are very skillful in reverse engineering. You'll feel comfortable to work with us!

Over 30 Years Experience in reverse engineering



PLASTIC

STAMPING

MACHINING

CASTING,
FORGING

RUBBER, MIM,
SINTERING

REVERSE
ENGINEERING

ASSEMBLY



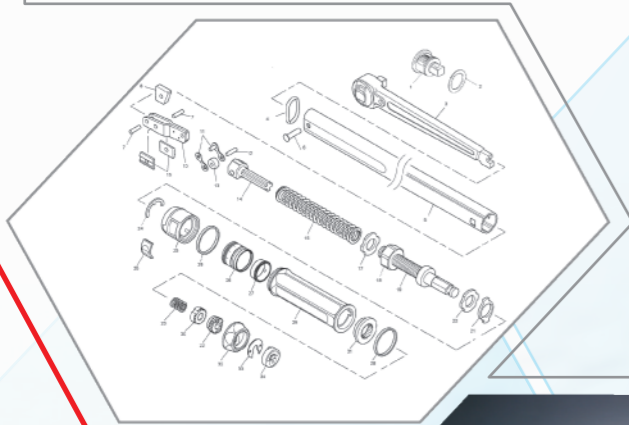
Assembly



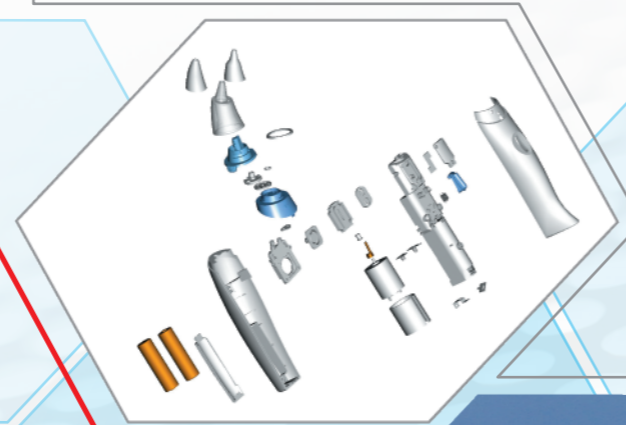
Our Product Assembly Service is dictated by our customers' own capabilities, facilities and requirements. From simply applying a label on the parts or on the packaging, to supplying a fully assembled product, Pan Taiwan can assist in different level of assembly work to free-up our customers' valuable resources to more gainful use. By designing semi-automatic machine, jig and the way of building the products, we allow our customers to cut operational costs, improve quality stability and drive consumer products to market in a shorter time-scale.

Getting to China & Taiwan Has never been easier!

● Testing Device Design & Manufacture



● Marketing package Design & Manufacture



● Semi-automatic assembly machine Design & Manufacture

